

SILVER FLEET

WOODS RIVER CRUISES

Silver Barracuda Refit 2009 with Osborne & Little

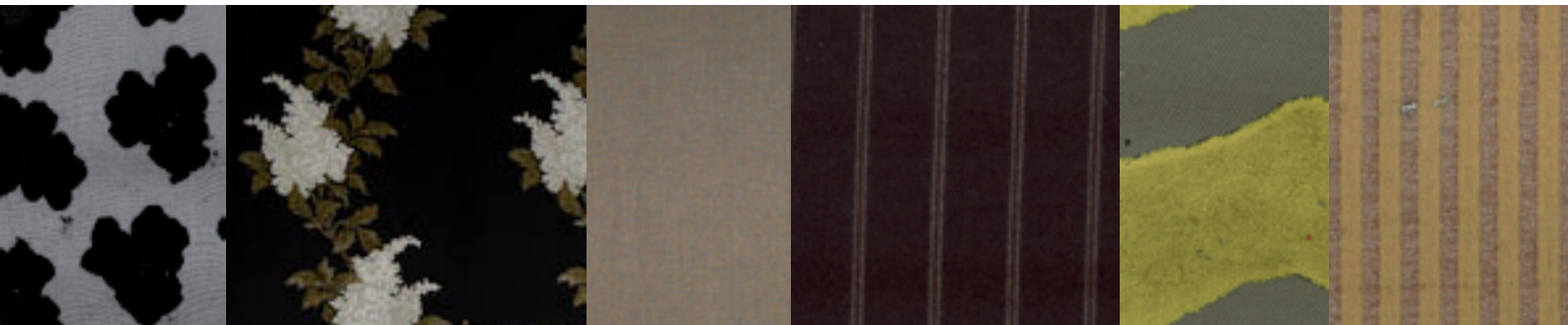
The Silver Barracuda is a beautiful, vintage river cruiser designed and built during the golden age of British shipbuilding skills – her latest incarnation reflects this precious heritage with gorgeous fabrics by Osborne & Little.



“Osborne & Little are delighted to be involved in a collaboration of style and elegance, combining contemporary fabrics and traditional craftsmanship to create a beautiful interior for this prestigious river cruiser.”

Peter Osborne – Chairman, Osborne & Little

OSBORNE & LITTLE



A B C D E F

The upper deck bar and lounge are lined with a graceful, curved window surround in a luxe pale silver, tan and black raised velvet weave (A) – which perfectly complements the contemporary caramel leather sofas and ottomans.

The ceiling panels throughout the vessel are refitted in a warm grey-brown velvet from Nina Campbell’s ‘Giverny’ Velvet range (C) which creates a tranquil background enhancing the light and river views.

SILVER FLEET

WOODS RIVER CRUISES

The lower dining deck is restyled to highlight the stunning, original oak woodwork with its Art Deco influences following through to a blown glass chandelier at the fore of the saloon reflecting the new cream, white and charcoal colour scheme with sage green highlights (B).

The classic booth seats are covered in Osborne & Little's new dark grey 'Lomond' wool flannel fabric (D) evoking the finest Savile Row suiting juxtaposed against Nina Campbell's dramatic floral 'Giverny' linen lined walls (B) and booth scatter cushions. The contrasting prints on each scatter cushion give each booth an individual signature. The lower deck dining chairs are fitted with the same window surround of the upper deck featuring a silver and black raised velvet weave (A).

The lower deck windows are also given the new curved window surrounds, reflecting the upper deck, in a sage and leaf green 'Serengeti' raised velvet (E) which frame London's riverscape perfectly.

A new feature aboard is an opulent 'Darius Rayure' fabric by Lorca (F) in a soft grey and caramel fine stripe which enables the lower deck to be enclosed to create an intimate dining deck for smaller parties.

The interior is further enhanced with original artwork, blown glass table lamps and sculptural side tables.

The inspiration

Pictured on the right, the famous dancer from the Art Deco period Josephine Baker with her pet cheetah – a subtle reference to the Art Deco period which was inspired by exotic animals. Exotic influences were as exciting as the attitude to life during the Art Deco period which is frequently associated with free-spirited flappers, cool jazz and swanky parties.

